

WJE148 Series



용도 Application

- 제철생산라인의 위치 조정용
Iron steel line
- 산업기계
Industrial machine
- 제지라인
Paper line

특징 Features

- 환경강화형
Rigid type
- 고 신뢰성
High reliability
- 장거리용
Long distance

형 식 Model

WJE 148 S 16 [MNP]

- WJE
Woongji Encoder
- S : 실축
Solid shaft
- 16 : 축경
Shaft size

분해능(P/R) Resolution

0025
0100
0200
0600
0900
1200
1500
2500

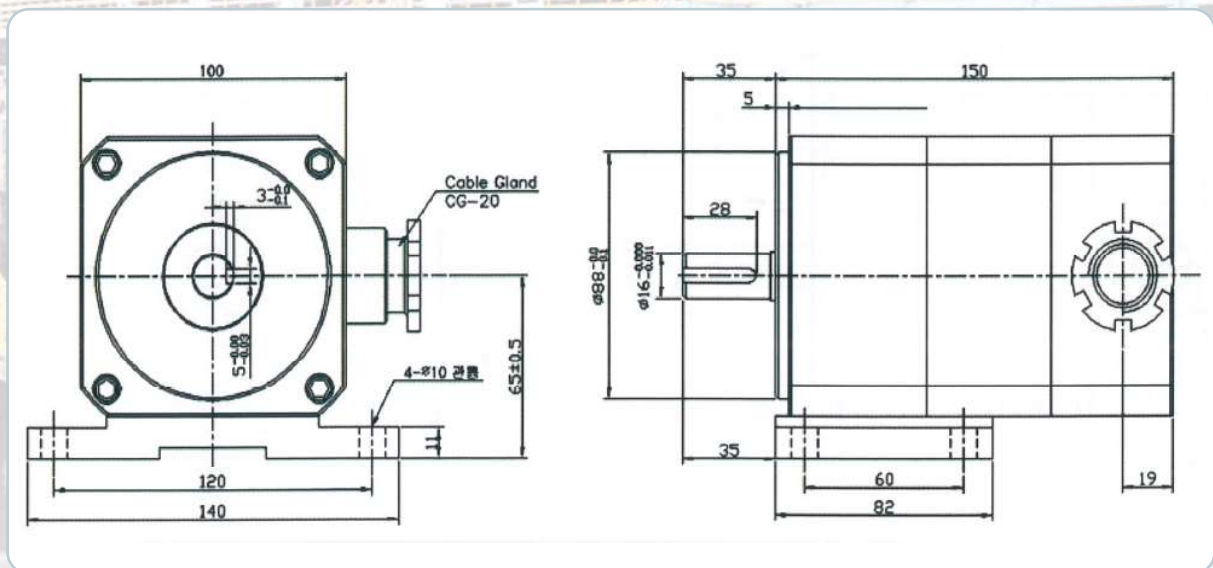
출력 신호 Output signal

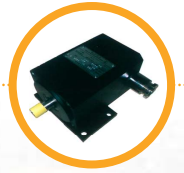
A, B
A, B, Z

출력 형태 Output form

Complemental
Open collector
Voltage output

외형도 External Dimension





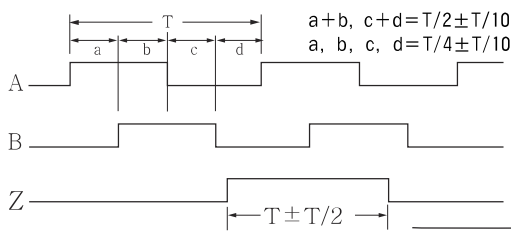
주요특성 Specification

전기적 특성 Electrical spec.			
분해능 Resolution	25 ~ 2500 P/R		
출력 형태 Output form	전원 Power supply	소비전류 Current consumption	
	Voltage output Open collector Complemental	DC +24V	300mA Max.
최대응답주파수 Maximum response frequency	100kHz Max.		
결선 Connection	6P 단자대		

기계적 특성 Mechanical spec.	
기동 토크 Starting torque	2kg-cm Max.
최대 회전수 Maximum rotating speed	2500rpm
허용 축 하중 Allowable shaft load	반경방향 : 5.0kg Max. (Radial) 축 방향 : 5.0kg Max. (Axial)
사용온도 Operating temp. range	-10°C ~ +70°C
내진동 Vibration	10G
내충격 Shock	100G

신호규격 Output phase shift

Voltage output, Open collector, Complemental



→ 엔코더 축을 보아 반시계방향 (CCW viewed from shaft end)

결선도 Connection table

핀구분	Voltage output Open collector Complemental
1	Vcc (+24V)
2	0V
3	0V
4	A SIG(LEAD)
5	B SIG
6	0V

출력회로 Output circuit

